

Uninterruptible Power Systems

EDP90

Model 300

225 kVA
250 kVA
300 kVA

Model 400

300 kVA
350 kVA
400 kVA

Model 500

400 kVA
450 kVA
500 kVA



CHLORIDE
POWER PROTECTION



- Parallel Capable up to 3,000 kVA
- True On-line Protection
- IGBT Inverter
- State-of-the-Art Communications Solutions
- 12-Pulse Rectifier
- Advanced Battery Management
- Internal Maintenance Bypass
- User Friendly, Multilingual Display
- Dual RS232 Ports
- Field Upgradeability

Environmental Specifications

Maximum Acoustical Noise Level 75 dBA at 3 feet
-8°C to 40°C Operating Temperature
Relative Humidity: 0 to 95% Noncondensing
Operation to 1,000 Meters Without Derating

Input Specifications

Voltage: Nominal \pm 20%
Frequency: 60 Hz \pm 5%
Power Factor: 0.83 Typical

Output Specifications

Voltage THD: < 3% for 100% Linear Loads;
< 5% for 100% Non-linear Loads
Output Regulation: \pm 1% with Balanced Load;
 \pm 3% with 100% Unbalanced Load
Frequency Regulation: \pm 0.05%

Options

ManageUPSNET Web Monitoring Software
MopUPS Network Shutdown Software
SNMP Adapter
LIFE2000 Factory Monitoring Service
External Maintenance Bypass
Remote Alarm Panel
Single Input (Same Voltage as Rectifier)
Parallel Capable
Power Distribution Modules
Extended Warranties
Preventive Maintenance Packages

Compliance

Listed to UL 1778

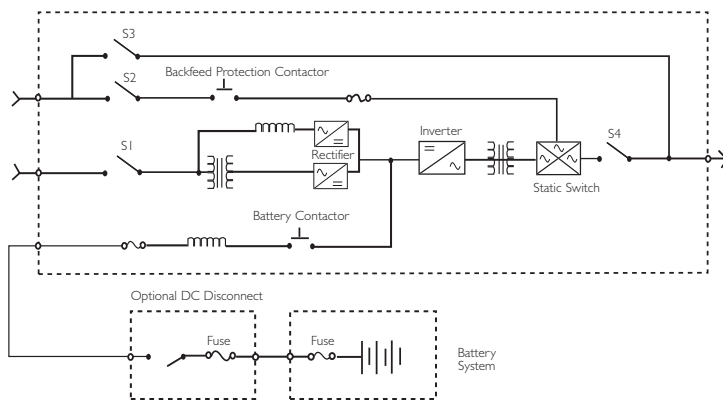
EDP90



Performance and Physical Data

MODELS 300, 400, 450	Model 300			Model 400			Model 500		
	4x4	4x4	4x4	4x4	4x4	4x4	4x4	4x4	4x4
kVA/kW @.8 PF	225/180	250/200	300/240	300/240	350/280	400/320	400/320	450/360	500/400
Input Voltage	480Y/277	480Y/277	480Y/277	480Y/277	480Y/277	480Y/277	480Y/277	480Y/277	480Y/277
Output Voltage	480Y/277	480Y/277	480Y/277	480Y/277	480Y/277	480Y/277	480Y/277	480Y/277	480Y/277
Frequency	60 Hz	60 Hz	60 Hz	60 Hz	60 Hz	60 Hz	60 Hz	60 Hz	60 Hz
Nominal Input Current	287	319	383	383	446	510	510	574	638
Maximum Input Current	359	399	478	478	558	638	638	717	797
Nominal Output Current	271	301	361	361	421	481	481	541	601
System Efficiency 100%	92	92	92	92	92	92	92	92	92
Full Load Heat Rejection (BTU/hr)	53,405	59,339	71,207	71,207	83,075	94,943	94,943	106,810	118,678
Height	70	70	70	70	70	70	70	70	70
Width	96	96	96	96	96	96	127	127	127
Depth	33	33	33	33	33	33	33	33	33
Weight	4,500	4,500	4,500	5,410	5,410	5,410	6,685	6,685	6,685

One Line Diagram



Battery Data

	225 kVA	250 kVA	300 kVA	350 kVA	400 kVA	450 kVA	500 kVA	Cabinets
Pack 123	7	5	—	—	—	—	—	2 x C
Pack 115	10	8	5	—	—	—	—	2 x C
Pack 125	13	11	8	5	—	—	—	2 x D
Pack 126	14	12	9	6	—	—	—	3 x C
Pack 133	18	15	12	9	4	—	—	2 x BC5
Pack 127	19	16	13	9	7	5	—	3 x C
Pack 128	24	20	16	13	10	8	6	3 x D
Pack 134	23	19	14	12	9	7	5	4 x C
Pack 135	29	25	19	15	13	10	8	4 x C
Pack 136	35	30	22	17	14	12	9	3 x BC5
Pack 137	35	31	24	19	16	13	11	4 x D
Pack 138	52	45	35	27	21	18	15	4 x BC5

Cabinet type C dimensions: 33.0" W x 33.0" D x 70.0" H
 Cabinet type D dimensions: 40.0" W x 33.0" D x 70.0" H
 Cabinet Type BC5 dimensions: 42.0" W x 32.0" D x 75.0" H

CHLORIDE
 POWER PROTECTION
www.chlorideups.com

28430 N. Ballard Dr.
 Lake Forest, IL 60045
 Phone: 800-239-2257, 847-990-3228
 Fax: 800-833-6829, 847-549-7917
 Service: 800-388-4234, 847-990-3229